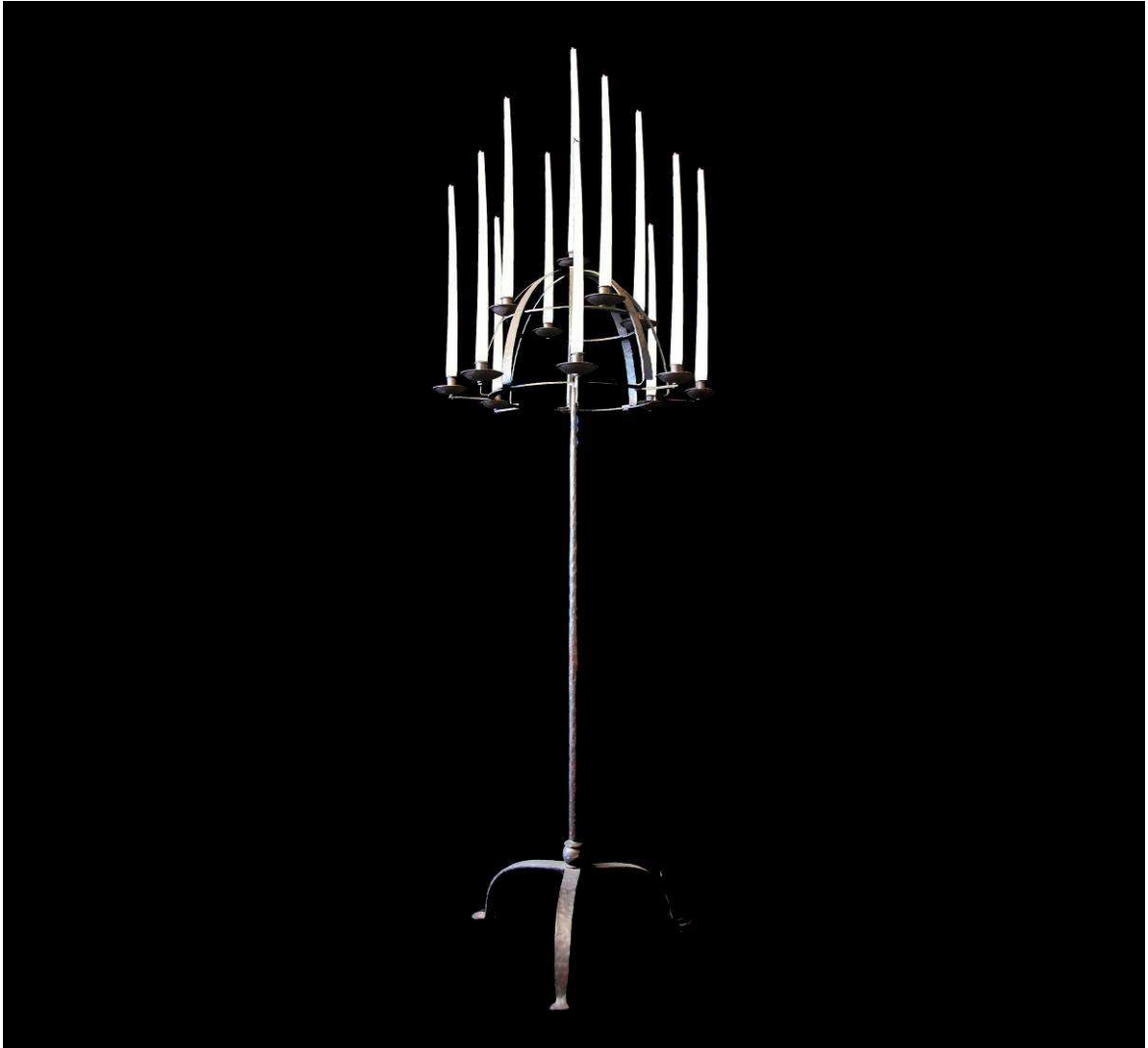




1 8 2 3



Floor Lamp 12053 "Maiden"

The Wrought Iron Family

The name of this archetypical candle holder derives from the iron maiden hinting on both the material as well as the crude shape. The paradigm might have been typical fixtures from medieval castles or palaces.

On top a slim pole of wrought iron sits a cage made of hammered iron bars holding 13 tassels for wax candles. The cage is riveted by hand for the crude and truculent appearance.

This item gave birth to many contemporary designs featuring this same motive but combining it with different materials and surfaces.

Design: Historical, circa 1300; Gothic

Material: Iron; Finish: Black

Special requests: Different finishes, bespoke size

Dia.: 65 cm, H.: 161 cm; Weight: 15 kg

Lights: 13 wax candles

LOBMEYR