



1 8 2 3



Drinking set no.284 - "Alphabet"

design: Studio Formafantasma (Andrea Trimarchi, Simone Farresin), 2014

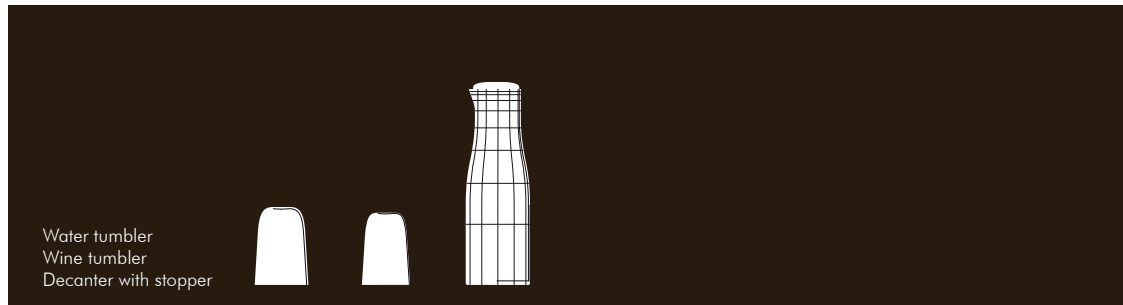
The Alphabet collection is composed of 12 wine and water glasses and a decanter. The design highlights the pleasure of diversity within a group, while toying with the rules of table setting.

The prototypes of the series were designed in 2013 for the Geymüllerschloß Dining Room as part of The Stranger Within, a site-specific installation commissioned by the MAK Museum in Vienna. Each of the set's 12 pieces is engraved with a singular pattern. In reference to the Lobmeyr archives and the decor of the shop, the design suggests a different way of arranging the pieces on a table. Like a crystal dome covering a still-life, the upside-down wine tumbler can be placed inside the water tumbler, allowing their unique ornamentations to be re-combined time and time again – a collection of miniature "miracle worlds". Two slender, golden lines indicate the positioning of a perfect arrangement.

LOBMEYR

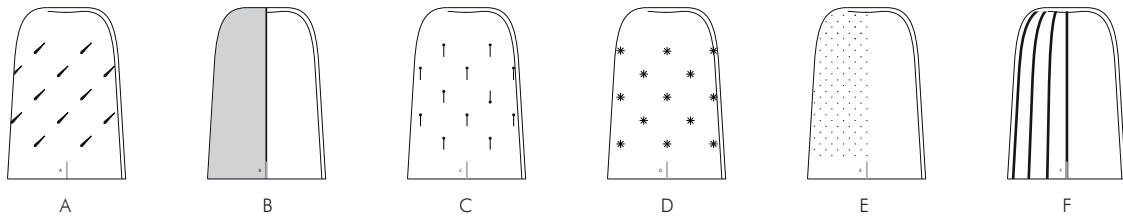
Drinking sets/ 284/ 1/ Mar 2018

SHAPES



DECORS

Water tumbler



Wine tumbler

