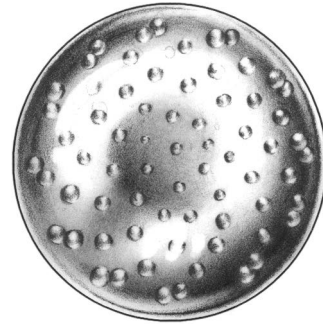
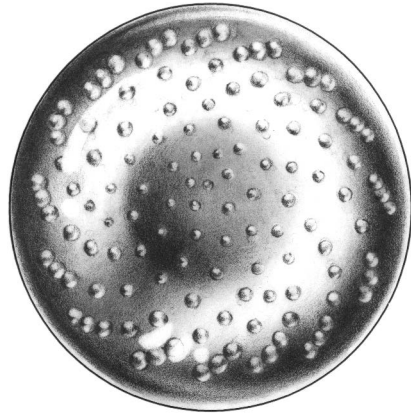


E. R. BUTLER & CO.



SIZE L
2 inch Diameter

SIZE M
1 5/8 inch Diameter

PREMIUM GRADE

Controlled Bubble Series Pressed and Hand Ground Crystal Door Knobs and Escutcheons

Patterned after E. & G.W. Robinson's Design Patent of 1837

Available in Clear Crystal.

2 or 1 5/8 in. Diameters for Doors and 1 1/4 in. for Cabinets and Fine Furniture.

Solid Turned Brass Shank and Rose (Shell Shank Type I Shown).

Standard, Custom Plated and Patinated Finishes Available.

Full Scale

FINE ARCHITECTURAL, BUILDERS' AND CABINETMAKERS' HARDWARE