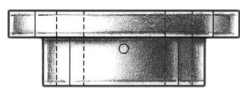
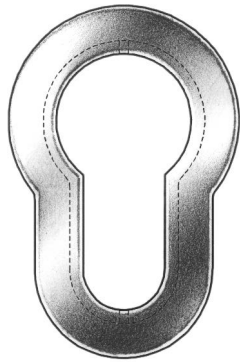
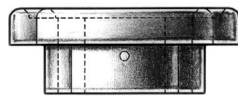
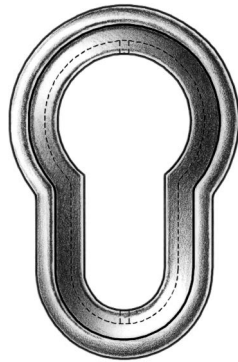


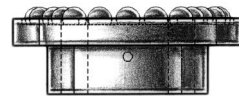
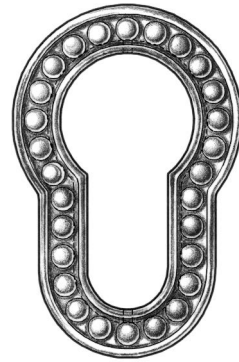
E. R. BUTLER & CO.



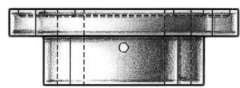
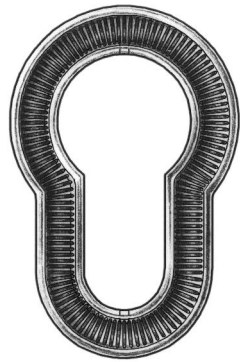
flat



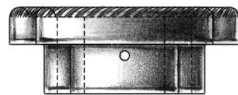
ridged



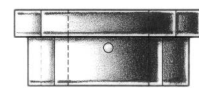
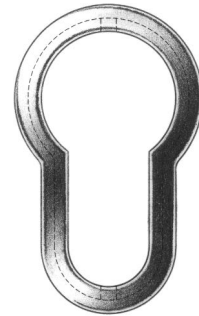
beaded



straight knurled



knurled



narrow

PREMIUM GRADE

Profile Cylinder Trim Rings

E. R. Butler & Co. Collection

For Use on DIN Profile (PZ) Cylinders.
Solid Machined Brass.
Standard, Custom Plated and Patinated Finishes Available.

Full Scale

FINE ARCHITECTURAL, BUILDERS' AND CABINETMAKERS' HARDWARE