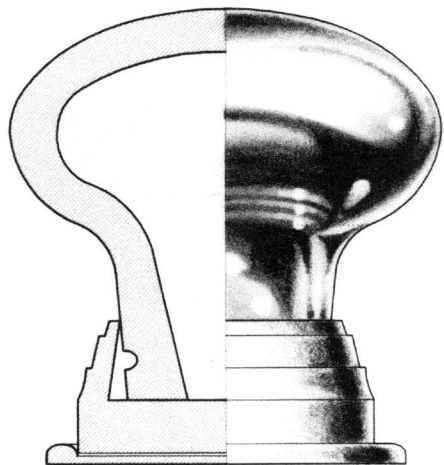
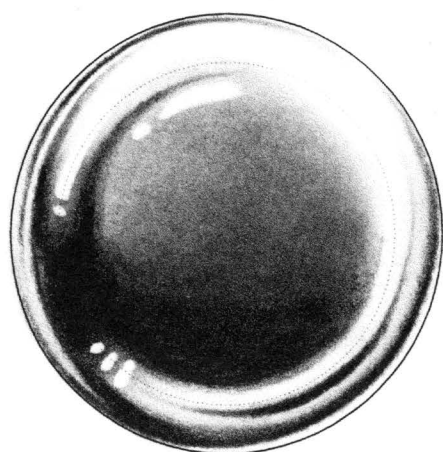


---

# BUTLER

NEW YORK

---

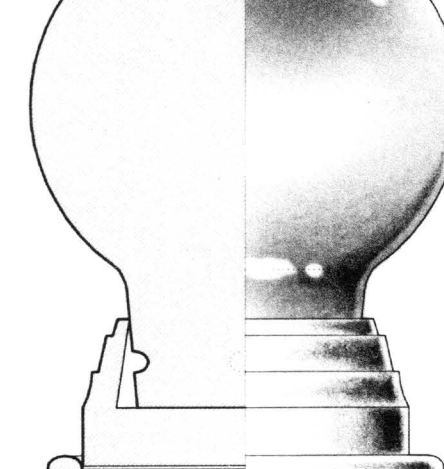
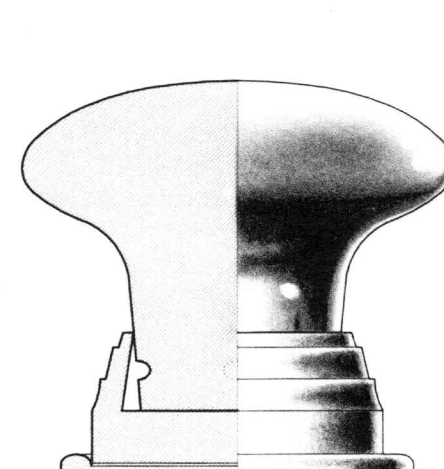
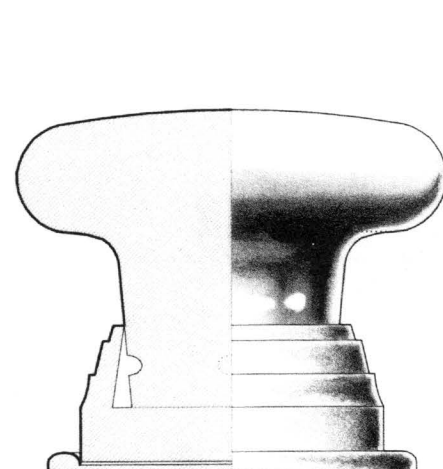
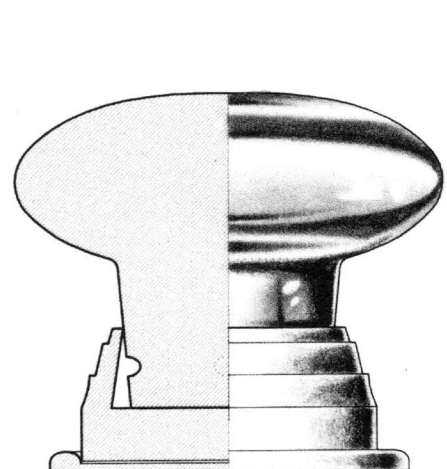
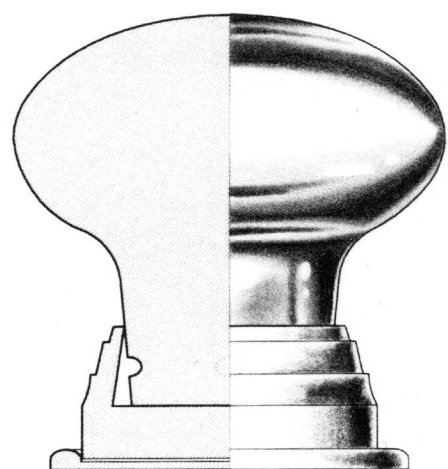
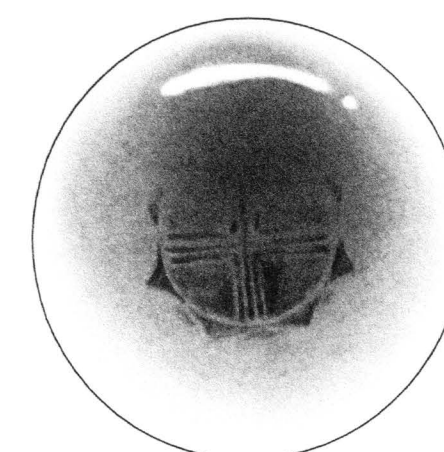
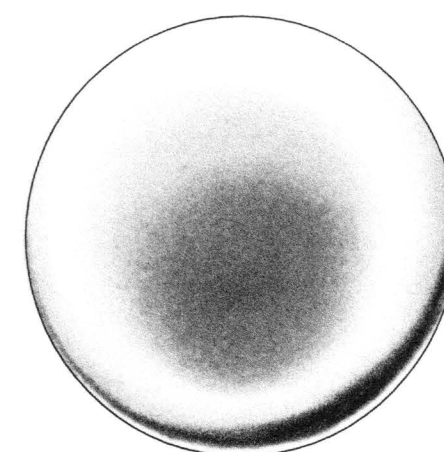
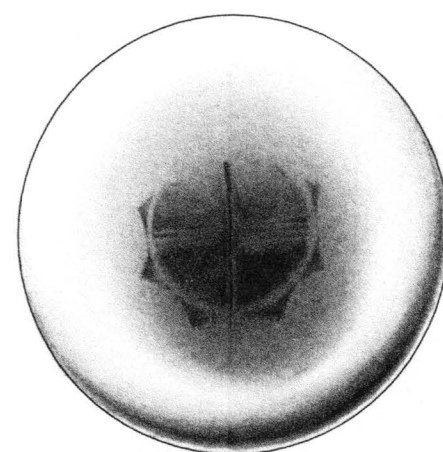
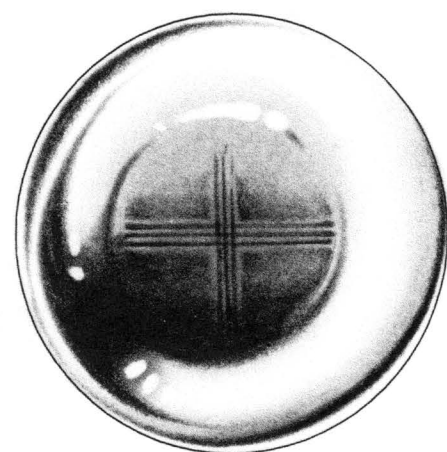
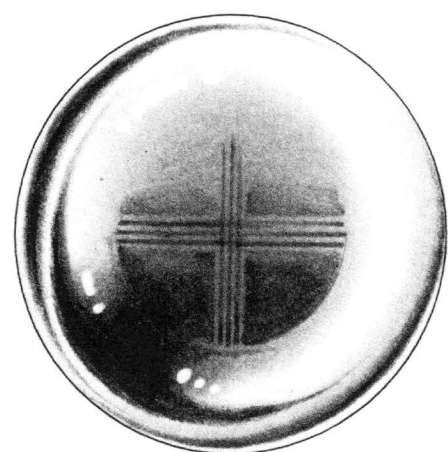


PREMIUM QUALITY

## Traditional Mercury Silver Glass Door Knobs and Roses

Patterned after E. & G.W. Robinson's Design Patent of 1837

Available in Sterling Silver, 24 Karat Gold or Cupric Nitrate Evaporated Interiors.  
2-1/4" and 1-1/4" Diameters and Projections. Solid Brass Turned Shank and Rose.



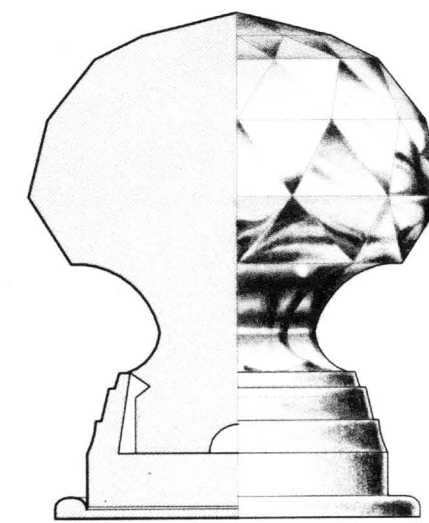
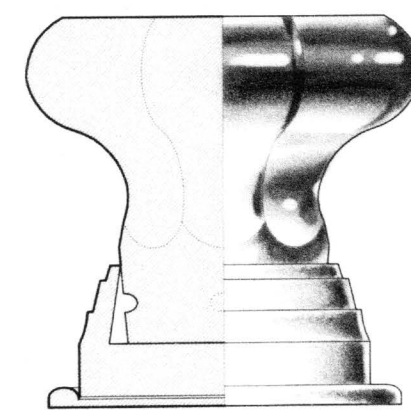
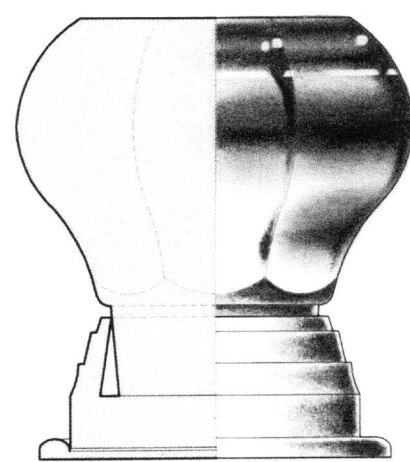
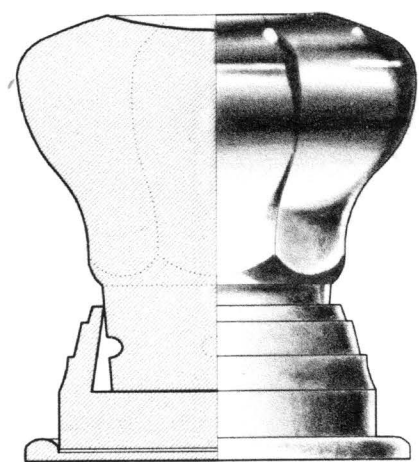
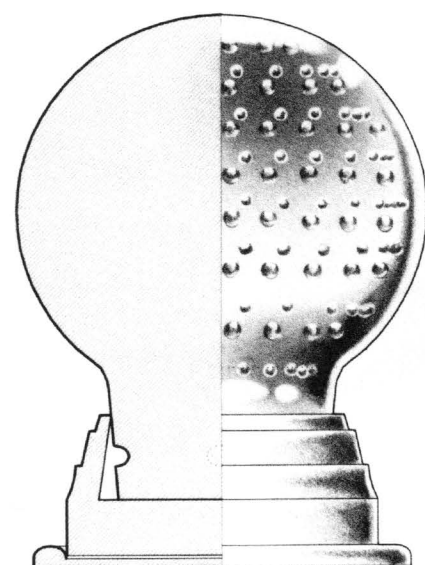
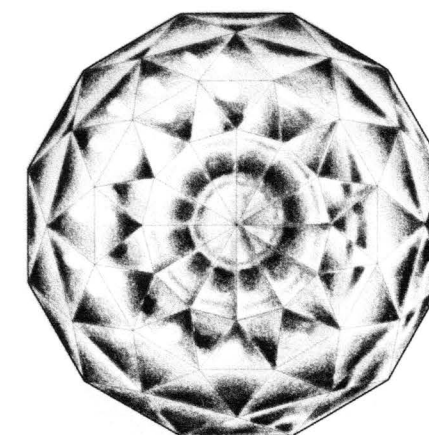
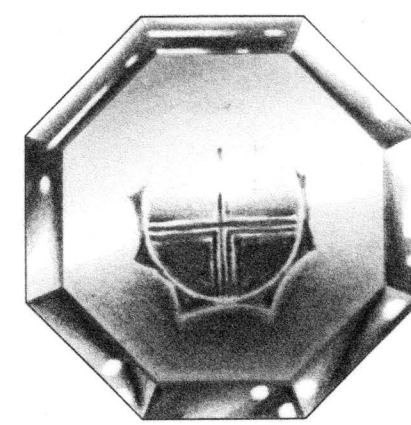
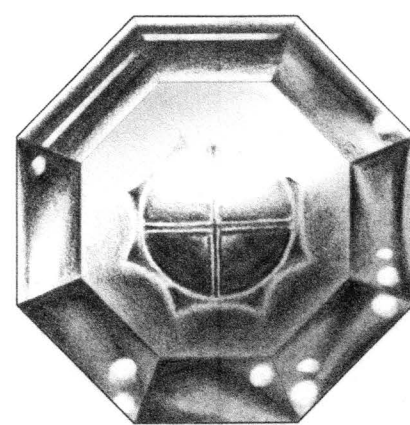
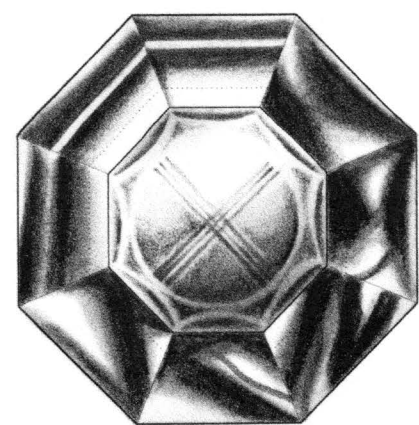
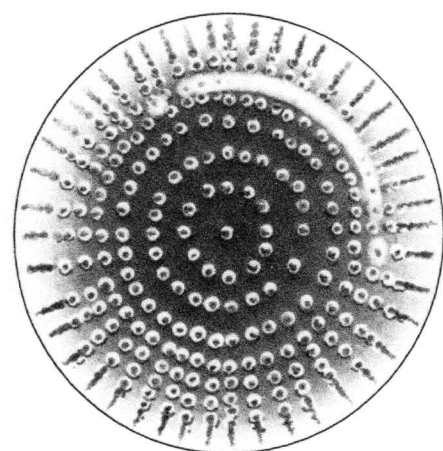
PREMIUM QUALITY

## Traditional Boston & Sandwich Glass Company Pressed Crystal Door Knobs and Escutcheons

Patterned after E. & G.W. Robinson's Design Patent of 1837

Available in Clear, Opalescent, Milk, Amber, Amethyst, Cobalt, Ruby or Black Crystal.  
2-1/4" and 1-1/4" Diameters and Projections. Solid Brass Turned Shank and Rose.

Technical Drawings by Jack Fetterman



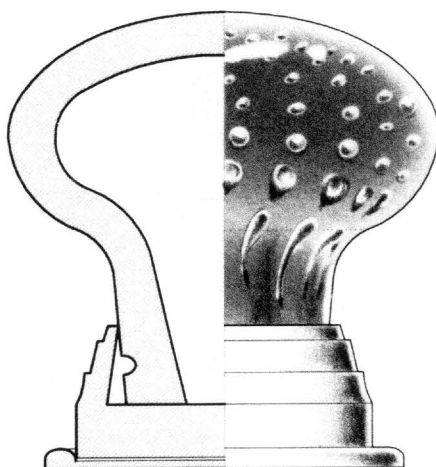
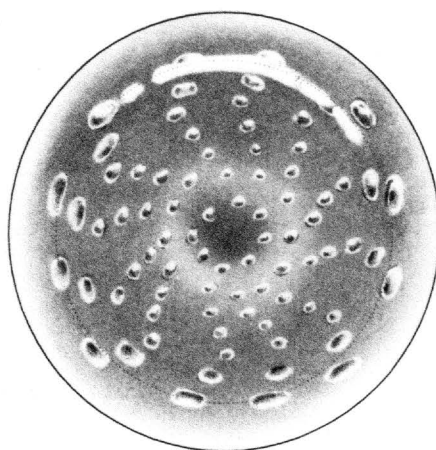
PREMIUM QUALITY

## Traditional Pressed and Hand Faceted Crystal Door Knobs and Escutcheons

Patterned after E. & G.W. Robinson's Design Patent of 1837

Available in Clear, Opalescent, Milk, Amber, Amethyst, Cobalt, Ruby or Black Crystal.  
2-1/4" and 1-1/4" Diameters and Projections. Solid Brass Turned Shank and Rose.

Renderings by M.K. Tan



PREMIUM QUALITY

## Cobalt Blue Bubble Crystal Door Knobs and Roses

Patterned after E. & G.W. Robinson's Design Patent of 1837

Hand Blown Murano Crystal. Special Patterns Available on a Custom Order Basis.  
2-1/4" and 1-5/8" Diameters and Projections. Solid Brass Turned Shank and Rose.

---

## EDWARD R. BUTLER CO., INC.

75 SPRING STREET - FIFTH FLOOR - NEW YORK NY 10012 TELEPHONE 212 925-3565 TELEFAX 212 925-3305

---